



# V-BOX MARK-II

STEREO ACTIVE DIRECT BOX



**USER MANUAL**

[WWW.VL.CO.TH](http://WWW.VL.CO.TH)

# INTRODUCTION

## DESCRIPTIONS

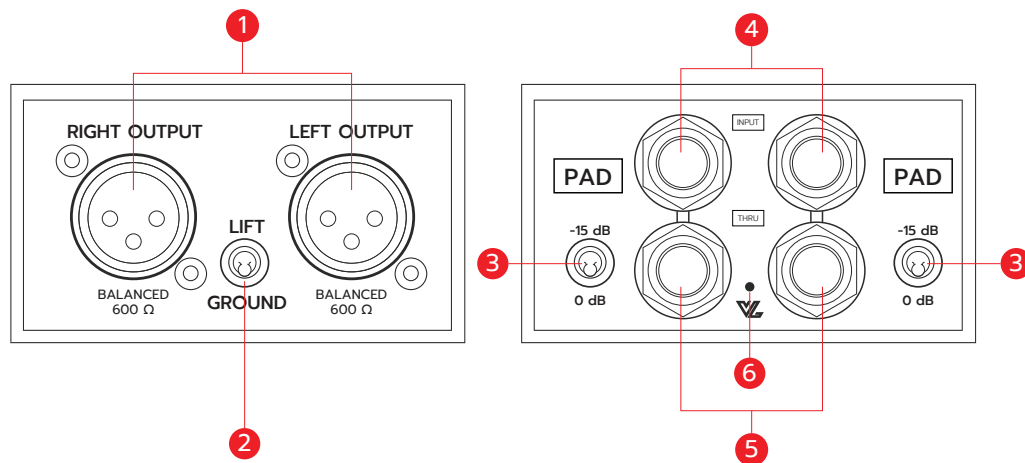
The V-Box Mark-II Stereo Active Direct Box Is a high performance active direct box for live concert touring and professional recording studio applications, with the ability to handle extreme transients without distortion while delivering the natural sound of your instrument.

## FEATURE

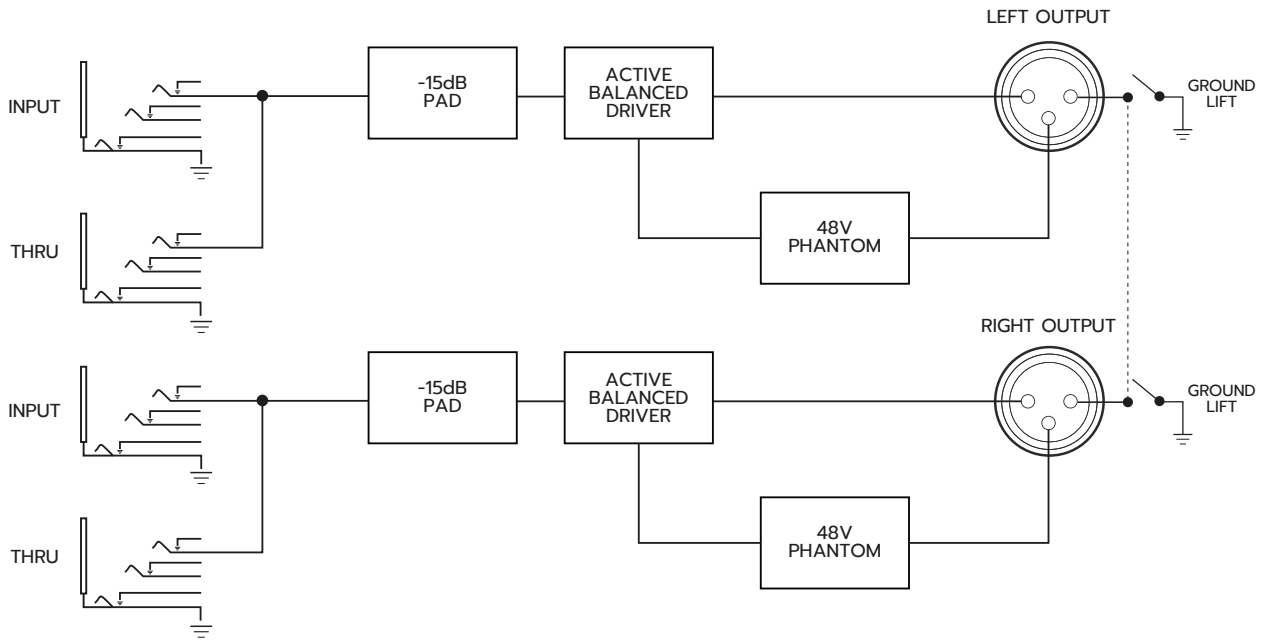
- Increased dynamic range and headroom.
- Retains the natural sound of the instrument.
- Powered by 48V Phantom, no batteries required.

## OVERVIEW

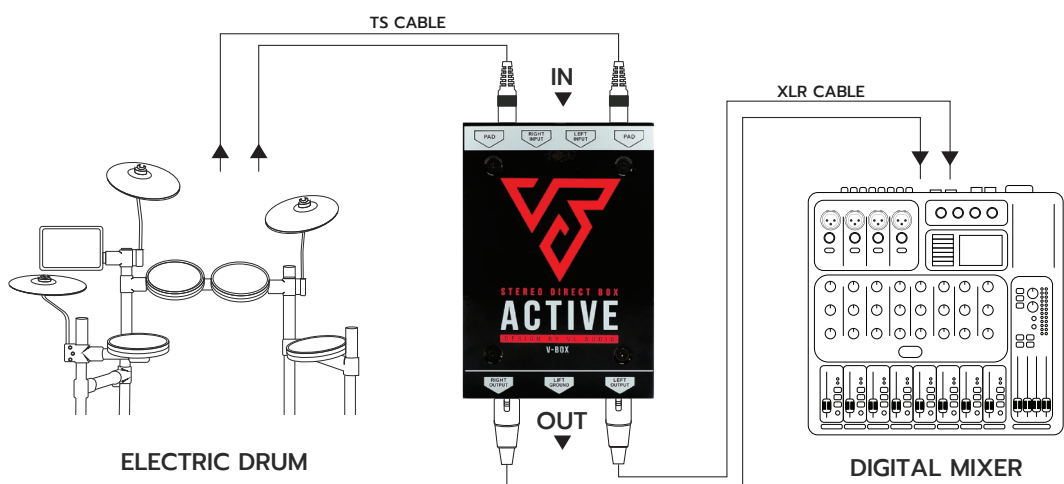
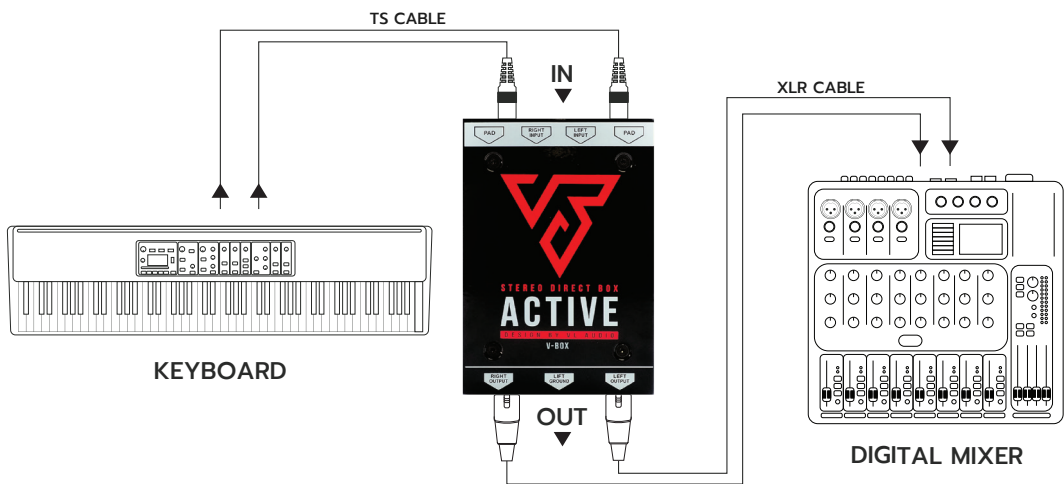
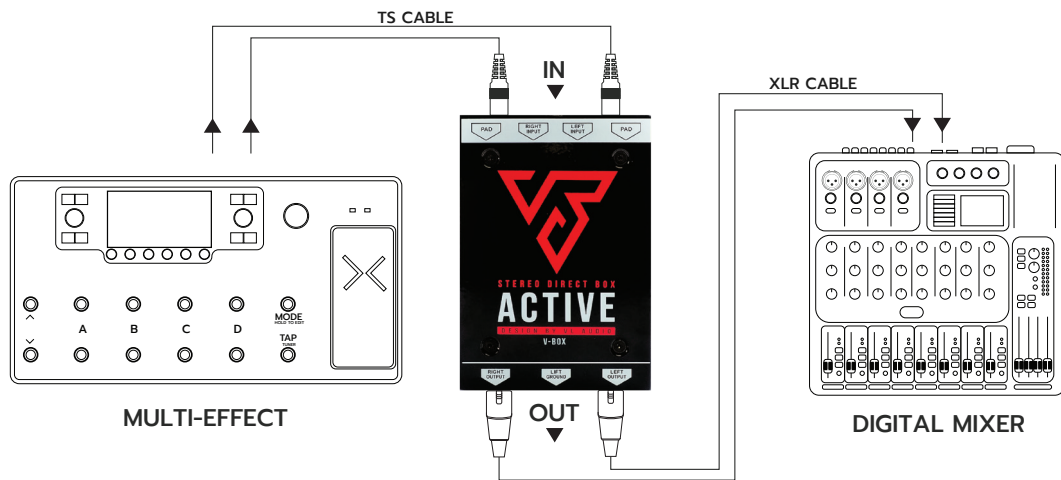
1. **Line-Level Outputs** Balanced output, Male XLR Connectors.
2. **Ground/Lift Switch** Disconnects XLR Pin-1 on both INPUT-1 and INPUT-2.
3. **Pad** Reduces The input sensitivity for active basses and high-output keyboards.
4. **1/4" Input** Instruments connection to The V-Box Mark-II Stereo Active Direct Box.
5. **1/4" Thru** Instruments thru-put to an Amplifier.
6. **Phantom power LED** Light to confirm Phantom power is present the working.



# BLOCK DIAGRAM



# APPLICATION



# TECHNICAL SPECIFICATION

## SPECIFICATIONS

Audio circuit type	Proprietary analog circuit with low-noise op-amp
Number of Channels	Stereo(Dual Mono)
Frequency response	20Hz-20kHz
Dynamic range	125dB
Total harmonic distortion	0.01% @1k, +4dBu
Phase deviation	-11° @20Hz, -2.8° @100Hz
Input impedance	220kΩ Unbalanced
Output impedance	200Ω Balanced
Maximum input	+15dBu @20Hz - 20kHz (With Pad)

## FEATURES

Ground lift	Yes
Phantom power LED	Yes
Input connectors	4 TS 1/4" (2 Thru)
Output connectors	2 XLR Male outputs

## GENERAL

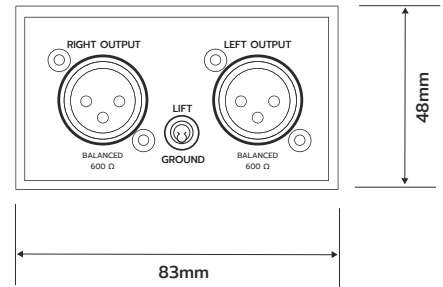
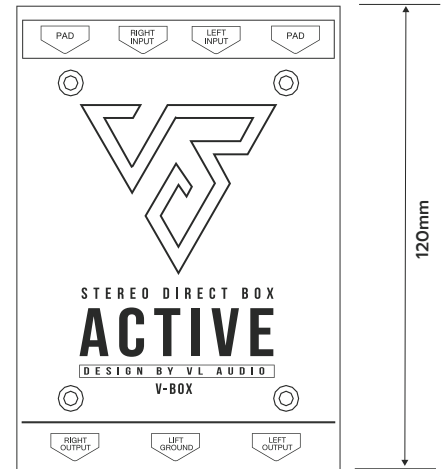
Conditions	For use in dry locations only
Warranty	Life time

## SIZE

Height	48mm
Width	83mm
Depth	120mm
Weight	0.38kg

## SHIPPING INFORMATION

Package height	54mm
Package width	98mm
Package depth	135mm
Package weight	0.47kg



STEREO ACTIVE DIMENSIONS